

AMV 7450H Betongsprøyterobot til salgs!

AMV 7450H betongsprøyterigg til selges. Har vært i daglig bruk frem til nå. Fremstår som noe slitt i lakken men er i teknisk god stand. EU godkjent 23.02.2024. Gode dekk og alle servicer er fulgt på chassiset. Lav kilometer. Maskinen kan besiktiges i Flekkefjord.



Årsmodell: 2016
Chassis: Mercedes Benz Arocs
Reg.nr: RA46511
Km Chassi: 13 957
Serienr: 07-10889
System: 1000V

Pris kr.: 1 950 000,-
Levert Flekkefjord

Se spesifikasjoner på de neste sidene

Kontaktinfo:

Kato Stien
Mob. 94532000
Mail: kato.stien@tunnelsupport.no

Petter Johnsen
Mob. 98282800
Mail: petter.johnsen@tunnelsupport.no





Kontaktinfo:

Kato Stien

Mob. 94532000

Mail: kato.stien@tunnelsupport.no

Petter Johnsen

Mob. 98282800

Mail: petter.johnsen@tunnelsupport.no



Kontaktinfo:

Kato Stien
Mob. 94532000

Mail: kato.stien@tunnelsupport.no

Petter Johnsen
Mob. 98282800

Mail: petter.johnsen@tunnelsupport.no



ANDERSEN MEK. VERKSTED A.S

Svegeskogen 2, N-4400 Flekkefjord - Norway
Tel: +47 38 32 04 20 - E-mail: company@amv-as.no

User Manual

Concrete Spraying Robot AMV 7450H

AMV Serial No: 07-10889

CUSTOMER:

DELIVERY: Week 27, 2016

TRANSLATED VERSION



Kontaktinfo:

Kato Stien
Mob. 94532000

Mail: kato.stien@tunnelsupport.no

Petter Johnsen
Mob. 98282800

Mail: petter.johnsen@tunnelsupport.no



3.1 Basic Data and Specifications, Including Noise Level

3.1.1 Main Components

Chassis:	Mercedes-Benz Arocs 3251K 8x4/4, 2016 mod.
Weight including driver:	30,120 kg.
Technical service weight:	37,000 kg.
Spraying boom:	AMV 7450, operator cabin mounted on inner pipe on main boom.
Compressor:	2 pcs Rotorcomp EVO-09
Generator	MECCALTE ECO 28N, 20KVA, 400V
High pressure cleaner	CAT 5CP5120 Triplex
Concrete pump:	Olin 565 ball valve pump

3.1.2 Hydraulic 'Power Pack'

Hydraulic oil volume:	Aprr. 644 litres
Pumps:	8 pcs variable axial piston pumps, 4 fixed piston pumps.
System pressure spr. boom:	Aprr. 160 bar
System pressure concr. pump:	Aprr. 215 bar
Oil coolers:	1 pcs w/ electrically powered cooling fan for the hydraulic system. 1 pcs w/ electrically powered cooling fan for the gearbox oil.
Filters:	High pressure filter: 10 micron Return oil filter: 10 micron Leak oil filter: 10 micron Ventilation filter: 10 micron Filtering filter: 1 micron

Automatic oil level switch.
Automatic oil temperature detector.
Heating element in hydraulic oil tank.

3.1.3 Water Hose Reel

Water hose reel:	Hydraulic
Hose:	Aprr. 50 m 5/4"
Hydraulic directional control valve, flow adjustment and blocking valve.	



ANDERSEN MEK. VERKSTED A.S

Svegeskogen 2, N-4400 Flekkefjord - Norway
Tel: +47 38 32 04 20 - E-mail: company@amv-as.no

3.1.4 Spraying Boom with Operator Cabin

Max. weight in operator cabin: SWL = 1 person (max. 150kg)
Reach: Length = 13,740 mm (reach appr. 16 meters).
Height = 13,728 mm (reach appr. 16 meters).

The operator cabin is equipped with both A/C and heater.

Max. speed:

Up/down 0.4 m/s
Telescope 0.4 m/s
Rotation 0.7 m/s

Measured speed:

Up/down appr. 0.1 m/s
Telescope appr. 0.16 m/s
Rotation appr. 0.23 m/s

Noise level

A noise level of max. 90dB(A) was measured during testing of the machine.

3.1.5 Water Supply System

Water pump: 28 litres/min at 280 bar
Minimum incoming water pressure at water pump: -0.2 bar
Maximum rotational speed at water pump: 1,450 RPM
Max. temperature incoming water at water pump: 40 °C

Pressure reduction valve
Water filter/sieve
Flow detector
Directional valves, pneumatically controlled

3.1.6 Air Supply System

2 x Rotorcomp EVO 09
Screw compressor 16 m³/min, 7 bar.

3.1.7 Central Lubrication System

Lincoln central lubrication system for lubrication of critical functions on the spraying boom, concrete cylinder + 28 manual lubrication points.

Overview of manual lubrication points:

Concrete pump lifting device 8 pcs
2.2 kW oil cooler motor 2 pcs
Spraying boom 14 pcs
ReCo drive (option) 4 pcs

Rev. 0 20th June 2016

3

Kontaktinfo:

Kato Stien
Mob. 94532000
Mail: kato.stien@tunnelsupport.no

Petter Johnsen
Mob. 98282800
Mail: petter.johnsen@tunnelsupport.no



ANDERSEN MEK. VERKSTED A.S

Svegeskogen 2, N-4400 Flekkefjord - Norway
Tel: +47 38 32 04 20 - E-mail: company@amv-as.no

These should be lubricated with intervals according to chapter 8.
For more information about the central lubrication system, see section 5.5.4.

3.1.8 Electrical System

Electrical oil level detector
Electrical temperature detector
Electronic over and under voltage guard
Digital volt and ampere meter

3.1.9 Lighting

The rig is equipped with powerful LED work lights which meet IP 67 requirements. The lighting is equipped with removable covers in yellow or transparent plastic material. A combination of yellow and transparent covers improves visibility when there is dust from the spraying. Always keep the covers on, since these protect the lights and give them a prolonged service life. Note! The lights are also equipped with a GoreTex membrane that helps remove condensation from the housing. Make sure that you never direct the jet of the high pressure cleaning nozzle directly at the covers during cleaning, since this might damage the membranes. Excessive use of strong chemicals (such as form oil) might also damage the membranes.

3.1.10 Operator Cabin

Served by a single operator
A/C with heating (3,000 W theoretically) and cooling (2,500 W theoretically)
Wiper and washer for windows cleaning.
Radio with DAB+ and AUX-input.
Adjustable operator seat.
Adjustable foot board.

3.2 Drawings with Main Measurements, Reach etc.

Note: See chapter 12 for detailed drawings.

Kontaktinfo:

Kato Stien
Mob. 94532000
Mail: kato.stien@tunnelsupport.no

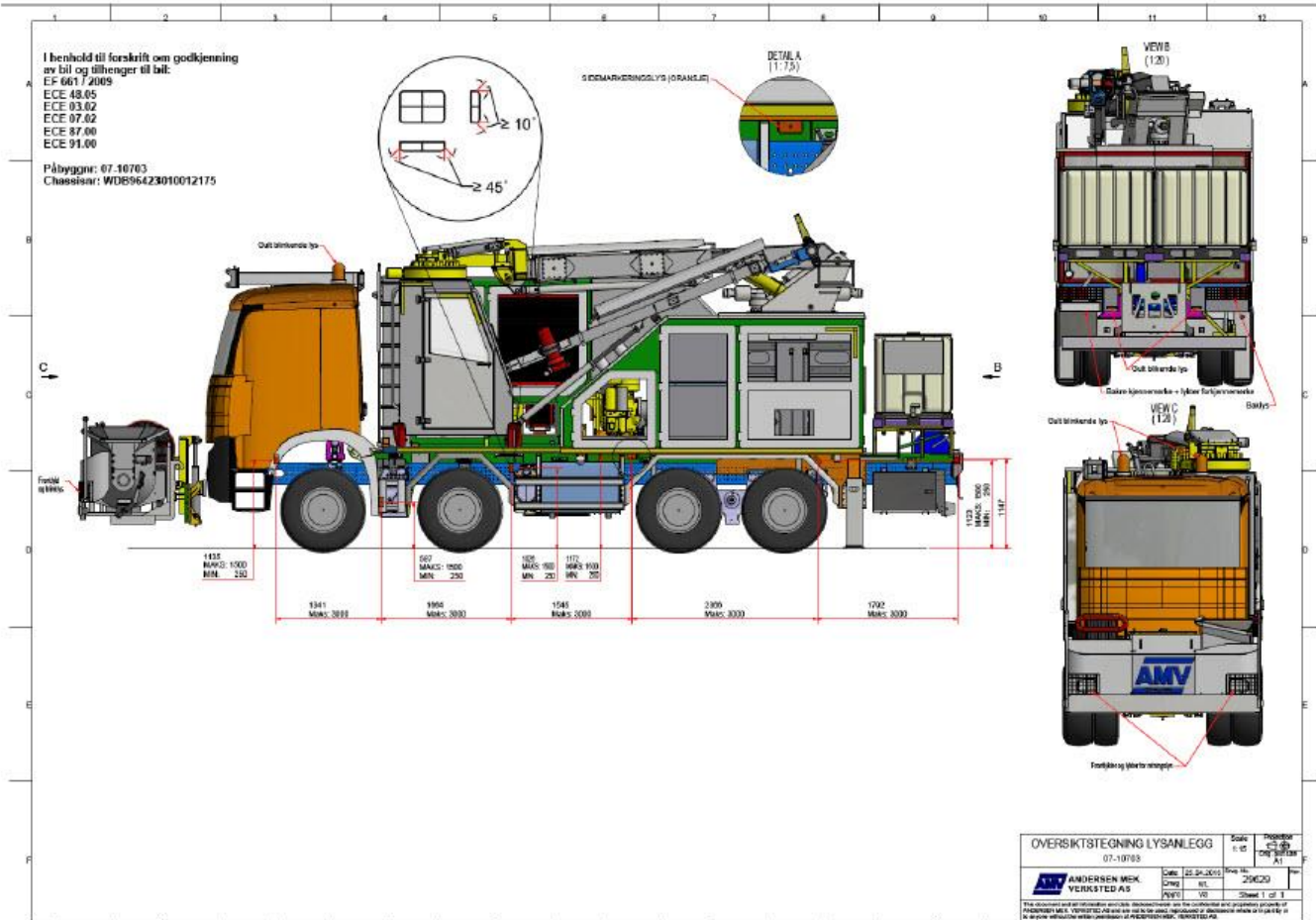
Petter Johnsen
Mob. 98282800
Mail: petter.johnsen@tunnelsupport.no



ANDERSEN MEK. VERKSTED A.S

Svegeskogen 2, N-4400 Flekkefjord - Norway

Tel: +47 38 32 04 20 - E-mail: company@amv-as.no



Rev. 0 20th June 2016

Kontaktinfo:

Kato Stien

Mob. 94532000

Mail: kato.stien@tunnelsupport.no

Petter Johnsen

Mob. 98282800

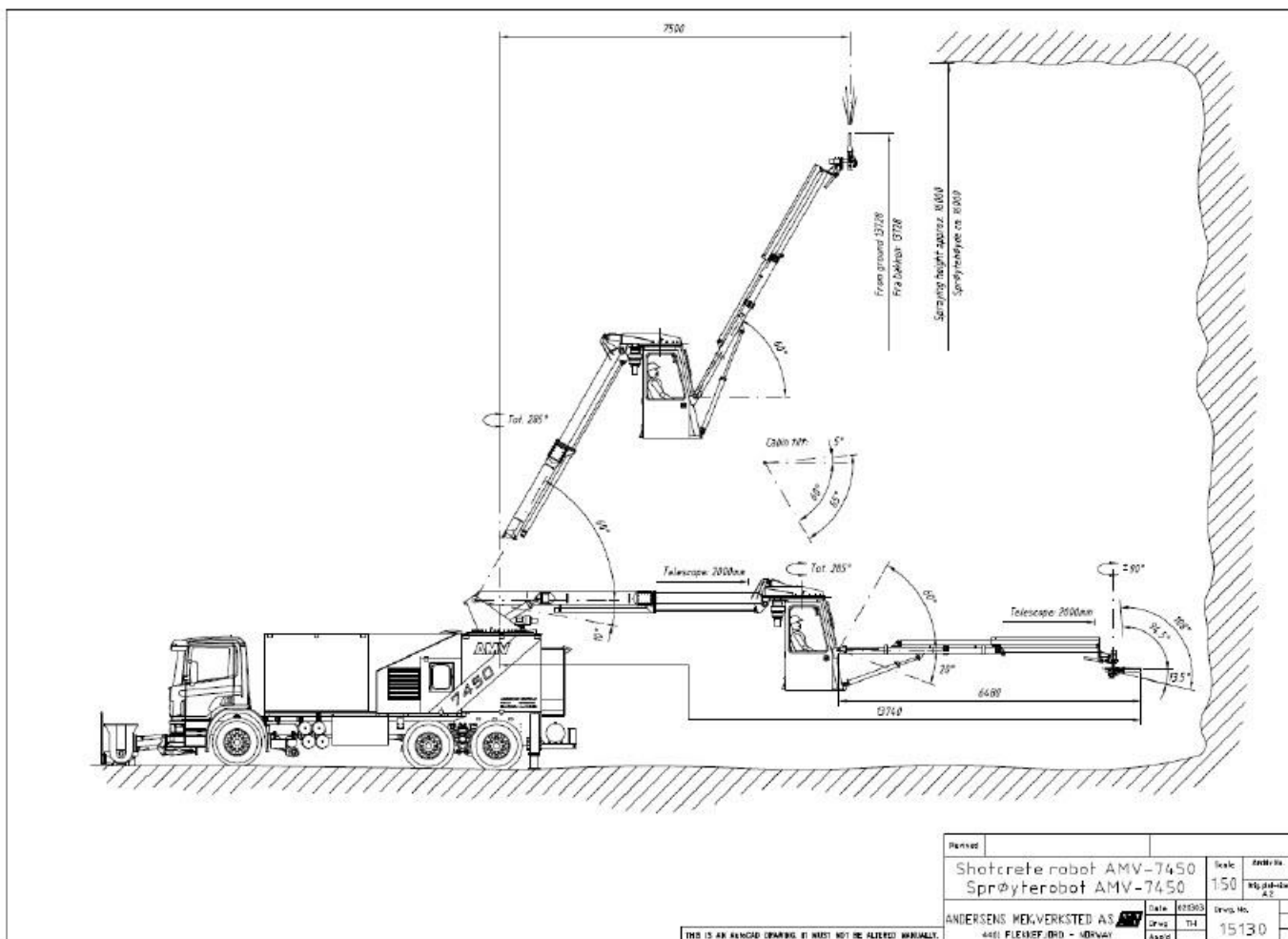
Mail: petter.johnsen@tunnelsupport.no





ANDERSEN MEK. VERKSTED A.S

Svegeskogen 2, N-4400 Flekkefjord - Norway
 Tel: +47 38 32 04 20 - E-mail: company@amv-as.no



Revised		Scale	2000/100
	Shotcrete robot AMV-7450	1:50	Weight 4.2
	Sprøyterobot AMV-7450		
ANDERSEN MEKVERKSTED AS	Date	02/09/16	Draw. No.
4401 FLEKKEFJORD - NORWAY	Draw	T14	15130
	Appr		

Rev. 0 20th June 2016

Kontaktinfo:

Kato Stien
 Mob. 94532000
 Mail: kato.stien@tunnelsupport.no

Petter Johnsen
 Mob. 98282800
 Mail: petter.johnsen@tunnelsupport.no

