

AMV 4200H Betongsprøyterobot til salgs!

AMV 4200H betongsprøyterigg til selges. Har vært i daglig bruk frem til nå. Fremstår som noe slitt i lakken men er i teknisk god stand. EU godkjent 20.09.2023. Gode dekk og alle servicer er fulgt på chassiset. Lav kilometer. Maskinen kan besiktiges hos AMV i Sunne.



Årsmodell: 2019
Chassis: Mercedes Benz Arocs
Reg.nr: HK18155
Km Chassi: 10 207 (20.09.2023)
Serienr: 07-11609
System: 1000V

Pris kr.: 5 950.000,-

Levert Flekkefjord

Se spesifikasjoner på de neste sidene

Kontaktinfo:

Kato Stien
Mob. 94532000
Mail: kato.stien@tunnelsupport.no

Petter Johnsen
Mob. 98282800
Mail: petter.johnsen@tunnelsupport.no





Kontaktinfo:

Kato Stien
Mob. 94532000

Mail: kato.stien@tunnelsupport.no

Petter Johnsen
Mob. 98282800

Mail: petter.johnsen@tunnelsupport.no



Kontaktinfo:

Kato Stien
Mob. 94532000

Mail: kato.stien@tunnelsupport.no

Petter Johnsen
Mob. 98282800

Mail: petter.johnsen@tunnelsupport.no



3.2 Main assembly shotcrete robot

Tecnical specification shotcrete robot AMV 4200 H

Shotcrete robot AMV 4200 H is designed for spraying concrete for water / frost protection and securing rock.

Shotcrete robot main data:

Dimensions:

Transport length: 11970mm
Width: 2550mm
Transport Height: ca. 3,8m
Transport weight max: 37000kg

Vehicle chassis:

Type: Mercedes-Benz Arocs 3258K 8x4/4
Motor: 578 HK, Euro 6
Max weight.: 32000kg (Teknical 37000kg)

The chassis has 2 support legs. Stroke length 420mm

Kontaktinfo:

Kato Stien
Mob. 94532000
Mail: kato.stien@tunnelsupport.no

Petter Johnsen
Mob. 98282800
Mail: petter.johnsen@tunnelsupport.no



3.3 Main data attached equipment

Spray boom

Bomb swing: +/- 65 degrees
Bom lift: 57 degrees
Telescope extension: 8000mm

Concrete pump

Type: Olin 5 65
Pump Quantity: Max. 25m³ / h
Pump pressure:

Compressor (2pcs.):

Type: Rotorcomp EVO-09
Airflow: 2x8m³ / min at 7 bar (theoretical)

Generator

Type: ECO 28N 20 kVA 3x400V+N 50H

Hydraulic «power pack»

Hydraulic oil volume: Ca.644L
Pumps: 8 pcs. variable axial piston pumps, 4 pcs. fixed piston pumps.
System pressure spray boom: approx. 215 bar
System pressure concrete pump: approx. 160 bar
Oil coolers: 1 pcs. w / electric powered cooling fan for hydr. system.
1 piece. m / electrically driven cooling fan for gear.

Filters: High pressure filter: 10 microns
Return oil filter: 10 microns
Leaky oil filter: 10 microns
Breath filter: 10 microns
Filtration filter: 1 microns

ReCo Drive

Propulsion of the vehicle by hydraulics. Hydraulic motor with gear coupled between the car's gearbox and shaft shafts. Controlled via radio control. Progress can go forward and backwards in speed. There is also a hydraulic motor mounted on the shaft on the steering column rod. In / out coupling occurs pneumatically.

Cable reel

Cable: 150m 3x75mm²
Hydraulically operated

Water reel

Pipe: approx. 50m inside Ø32 (5/4 ")
Hydraulically operated

Water system

Water pump: 28l / min at 280 bar
Minimum water pressure on the water pump: 0.2 bar
Maximum rotational speed of water pump: 1450 RPM
Maximum water temperature on the water pump: 40 °C



Pressure Reducing Valve
Water filter / strainer
Flow guard
Directional valves, pneumatically controlled

ACC

2 tanks of each 1000L with ACC fluid are located at the hydraulic tank. The tanks have 240V heating element for frost protection.

Central Lube

Lincoln central lubrication system for lubrication of critical functions on the spray boom and concrete pump + manual lubrication points. The boom has a pump unit and the concrete pump has a pump unit.

Overview of manual lubrication points:

Concrete pump lifting device:	8 pcs.
Electric motor for oil cooler:	2 pcs. / motor
Electric motor for hydraulic pumps:	2 pcs. / motor
Spray bomb:	7 pcs.
ReCo drive:	4 pcs.

These should be lubricated according to given intervals as described in Chapter 8.

For more information on the central lubrication system see chapter 5.5.4.

Electrical System

Electric oil level monitor
Electric temperature monitor
Electronic protection for over and undervoltage
Digital volt and ammeter

Radio Control

It is supplied with hetronic radio control with the sprayer boat. It mainly controls bomb movements, concrete pump system and hydraulic drive / control of the Vehicle.

Lights

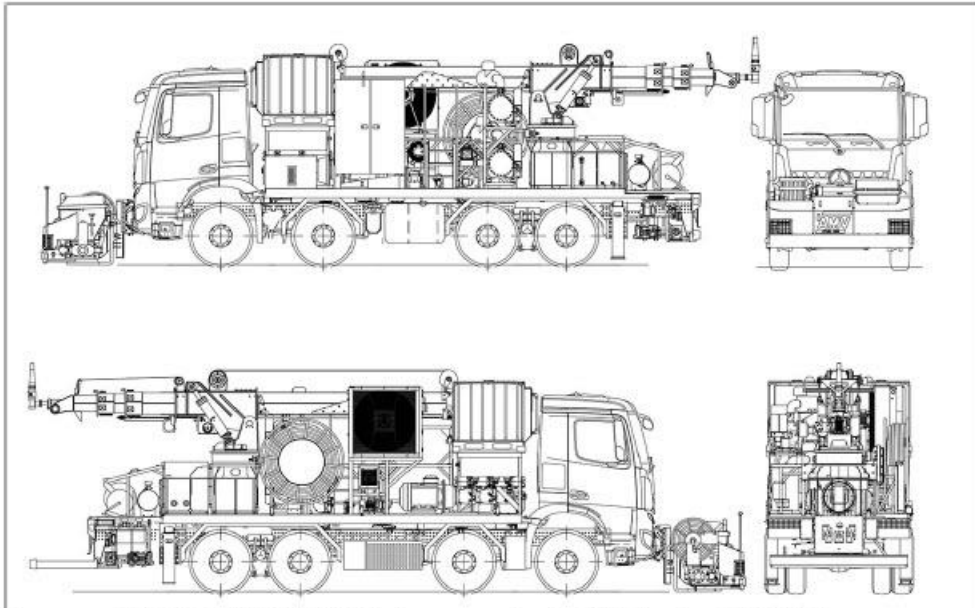
The rig is equipped with powerful LED work meets the protection class IP 67. The lamps are equipped with removable plastic covers in either yellow or clear finish. A combination of yellow and clear covers improves visibility through spray dust. It is recommended to always keep the protective covers on as these protect headlights and helps to improve life for those. NB! The lamps are also equipped with a GoreTex membrane to release any condensed out of the lamp body. Be careful not to direct the water jet from the high pressure cleaner directly to these when washing the machine as this may damage the membrane. Excessive use of strong chemicals (such as filmo / form oil) can also damage these membranes.

The boom is equipped with halogen worklight.

Extinguishing

Shotcrete robot is equipped with semi-automatic fire protection facility for engine compartments, cassis. It is also mounted 6 kg hand device.

3.4 Main assembly



Dwg.nr. : 07-11408 AMV 4200H betongsprøyterobot, Metrostav RA47514

Posnr.	Varenummer	Antall	Varenavn
00.1	34968-000	1,00	Reservedelsliste AMV 4200H, 07-11408
00.2	34969-000	1,00	Slitedelsliste AMV 4200H, 07-11408
01	33855-000	1,00	Chassis + RECO + deler, AMV 4200H, 07-11408
01.1	33361-000	1,00	Registreringstegninger, AMV4200H 07-11124
01.2	34834-000	1,00	Hovedsammenstilling AMV 4200H, 07-11408
02	34047-000	1,00	AMV 4200 teleskop bom SAMMENSTILLING
03	33772-000	1,00	Hjelperamme hovedsammenstilling, AMV 4200H
04.1	31942-000	1,00	Betongpumpe Olin 565. AMV 4200. Sammenstilling
04.2	34552-000	1,00	Betongrist for Olin 5 65 betongpumpe el.vibrator. AMV 4200H
04.3	0055-3481	1,00	Vibrator wb 160, 220/400v
04.4	30563-000	1,00	Løfteanordning for betongpumpe SAMMENSTILLING
05	33889-000	1,00	Hydraulikkskjema, AMV 4200H, 07-11408
06	33890-000	1,00	Vann/luft/filmo/acc./frostsikring, AMV 4200H, 07-11408
07	33135-000	1,00	Sentralsmøring AMV 4200 bom SAMMENSTILLING
08	34223-000	1,00	Elektro 7-11408 Metrostav
09	32321-000	1,00	Teleskop kabelvinde, AMV 4200H SAMMENSTILLING
10	35017-000	1,00	Informasjon og advarselsskilt, AMV 4200H, 07-11408
11	32328-000	1,00	Brannslukningssystem AMV 4200H SAMMENSTILLING
12	34790-000	1,00	Betonglinje Olin 5 65 AMV 4200H

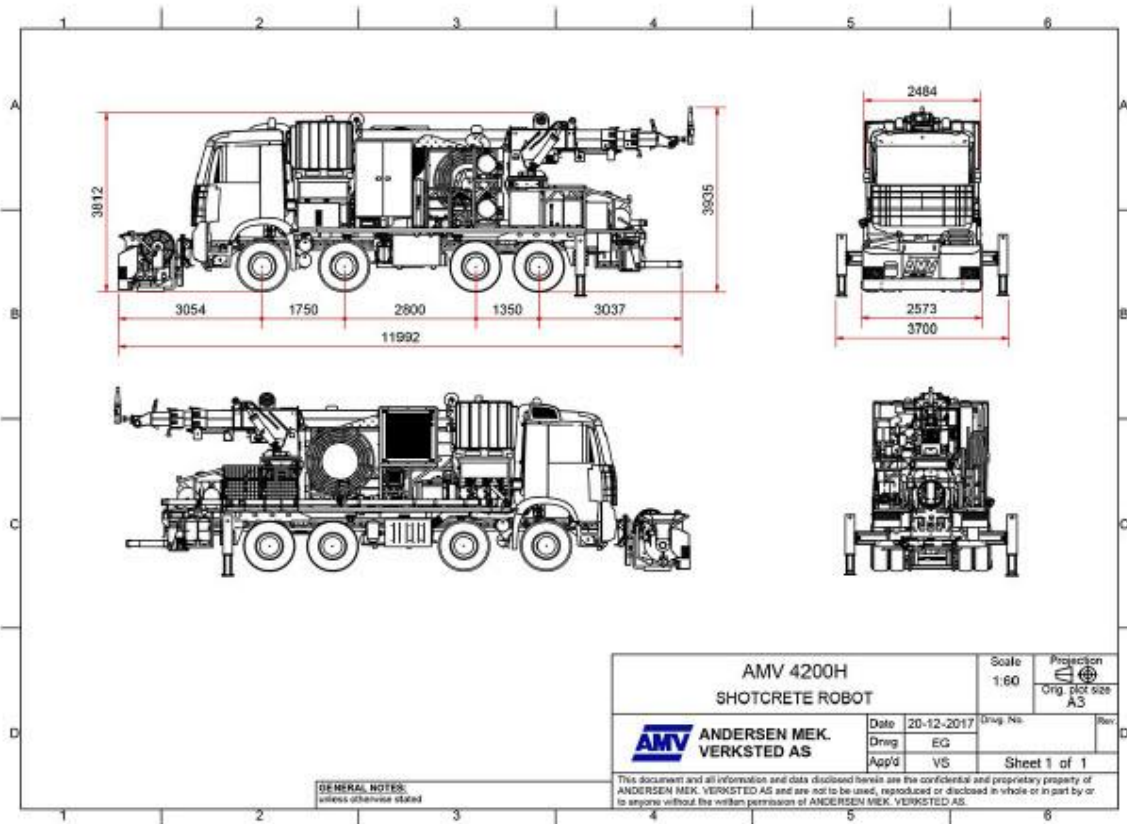


ANDERSEN MEK. VERKSTED A.S

Svegeskogen 2, N-4400 Flekkefjord - Norway
Tel: +47 38 32 04 20 - E-mail: company@amv-as.no

Revisjon - 0

3.5 Drawing with main measure



Kontaktinfo:

Kato Stien
Mob. 94532000

Mail: kato.stien@tunnelsupport.no

Petter Johnsen
Mob. 98282800

Mail: petter.johnsen@tunnelsupport.no

